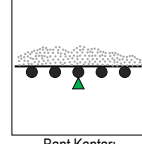


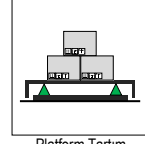
Model: 2102 - K



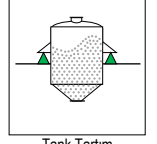
100 kg ... 2.000 kg



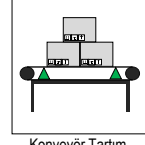
Bant Kantarı



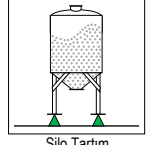
Platform Tartım



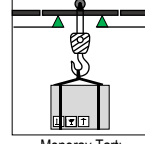
Tank Tartım



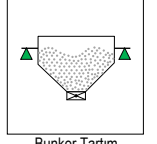
Konveyör Tartım



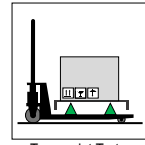
Silo Tartım



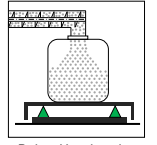
Monoray Tartı



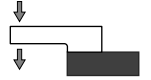
Bunker Tartım



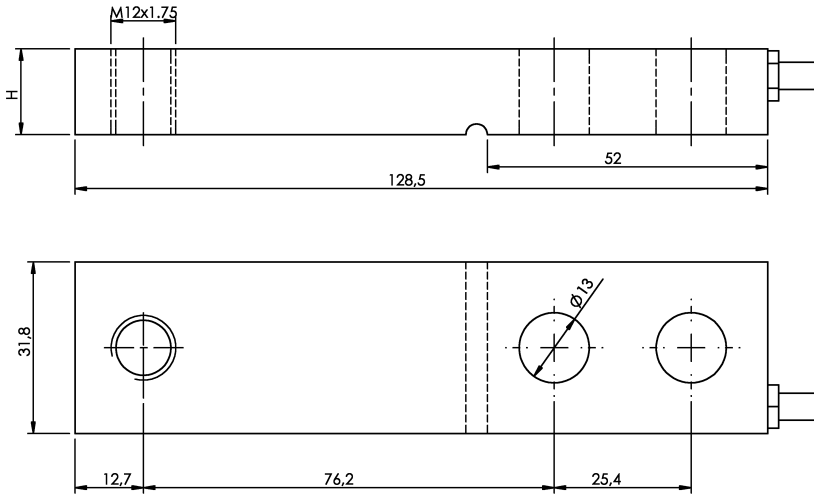
Transpalet Tartım



Dolum Uygulamaları

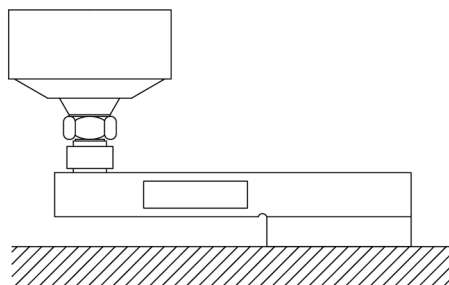


Ölçüler (mm)



Kapasite	Ölçüler
	H
0.1t ... 0.5t	15.9
0.75t ... 1t	19.1
1.5t ... 2t	25.4

Kullanım Şekli / Montaj Aparatı



Teknik Özellikler

	Parametreler	Değer	Birim
1	Nominal Kapasite (E_{max})	100, 200, 300, 500, 750, 1000, 1500, 2000	kg
2	Sinyal Kazancı	$2,0 \pm 0,003$	mV/V
3	Toplam Hata	$< \pm 0,03$	%FSO
4	Sıfır üzerine sıcaklık etkisi	$\pm 0,02$	%FSO/10°C
5	Çıkış üzerine sıcaklık etkisi	$\pm 0,02$	%FSO/10°C
6	Sıfır Dengesi	$< \pm 1,0$	%FSO
7	Sıcaklık Aralığı (Düzeltilmiş)	-10 ... +40	°C
8	Sıcaklık Aralığı (Güvenli)	-35 ... +65	°C
9	Güvenli Aşırı Yükleme	120	% E_{max}
10	Kırılma kapasitesi	180	% E_{max}
11	Besleme Gerilimi (Tavsiye)	5 ... 12	V
12	Besleme Gerilimi (Maks)	18	V
13	Giriş Direnci	400 ± 20	Ω
14	Çıkış Direnci	352 ± 3	Ω
15	Yalıtım Direnci	> 5000	M Ω
16			
17			
18			

(*) FSO = Full Scale Output

Kablo Özellikleri

Kablo Uzunluğu:3 m

Kablo Çapı:Ø5 mm

