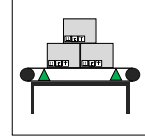


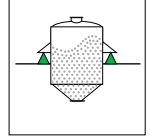
Model: 3201 - L



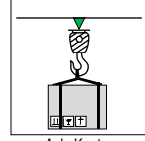
2 t ... 20 t



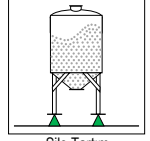
Konveyör Tartım



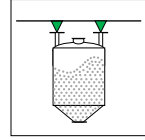
Tank Tartım



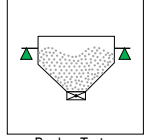
Aski Kantarı



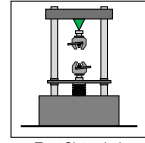
Silo Tartım



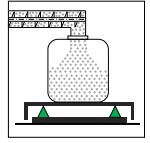
Asma Tank



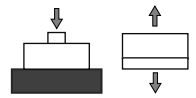
Bunker Tartım



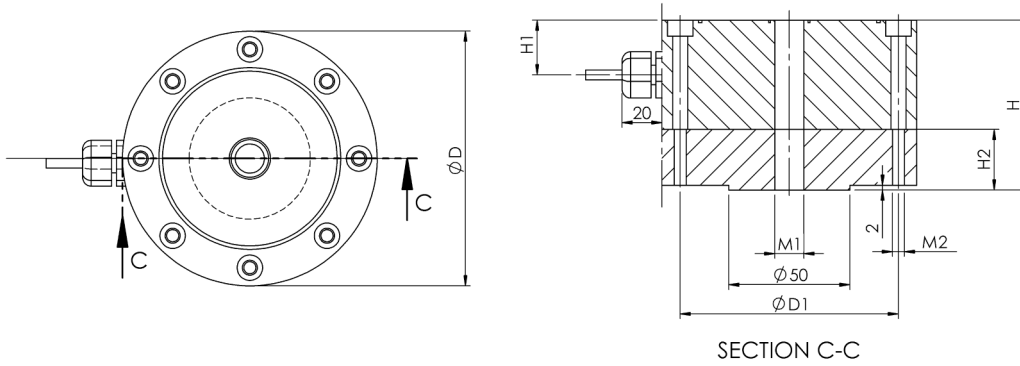
Test Sistemleri



Dolum Uygulamaları



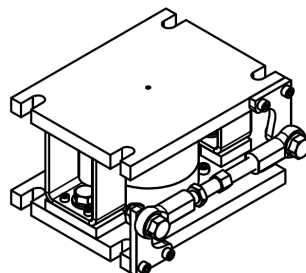
Ölçüler (mm)



Kapasite (t)	Ölçüler (mm)						
	ØD	ØD1	H	H1	H2	M1	M2
2	105	90	70	22.5	25	M14x2	M6x55
5	120	104.5	80	25	30	M20x1.5	M8x65
10 ... 20	Ø155	133	90	27.5	35	M32x2	M10x75

Kullanım Şekli / Montaj Aparatı

3201-M01



Teknik Özellikler

	Parametreler	Değer		Birim
1	Nominal Kapasite (E_{max})	2, 5	10, 20	ton
2	Sinyal Kazancı	$2 \pm \%0.3$		mV/V
3	Toplam Hata	$\leq \pm \%0.05$	$\leq \pm \%0.1$	%FSO
4	Sürünme Hatası	$< \pm 0,03$		%FSO
5	Sfır Üzerine Sıcaklık Etkisi	$< \pm 0,002$		%FSO / °C
6	Çıkış Üzerine Sıcaklık Etkisi	$< \pm 0,002$		%FSO / °C
7	Sıcaklık Aralığı (Düzeltilmiş)	-10 ... +50		°C
8	Sıcaklık Aralığı (Güvenli)	-30 ... +70		°C
9	Güvenli Aşın Yükleme	150		% E_{max}
10	Kırılma kapasitesi	200		% E_{max}
11	Besleme Gerilimi (Maks)	15		V
12	Giriş Direnci	400 ± 20		Ω
13	Çıkış Direnci	352 ± 3		Ω
14	Yalıtım Direnci	> 5000		M Ω (100V)
15				
16				
17				
18				

(*) FSO = Full Scale Output

Kablo Özellikleri

Kablo Uzunluğu:12 m

Kablo Çapı :Ø6 mm

