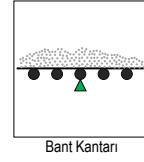


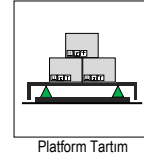
Model: 2101 - L2



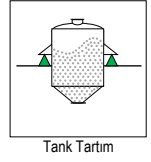
75 kg ... 10.000 kg



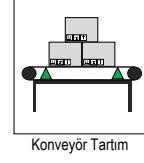
Bant Kantarı



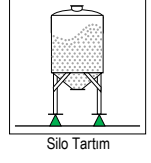
Platform Tartım



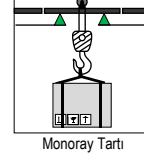
Tank Tartım



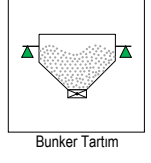
Konveyör Tartım



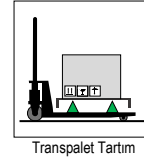
Silo Tartım



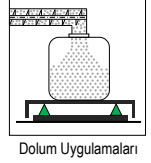
Monoray Tartı



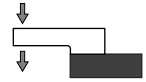
Bunker Tartım



Transpalet Tartım

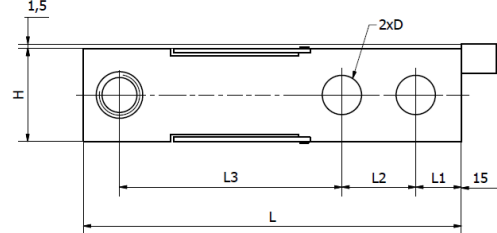
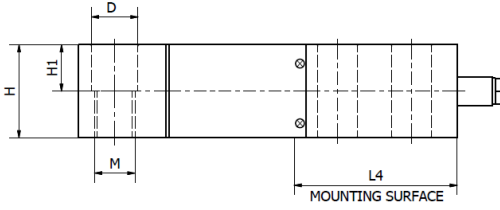


Dolum Uygulamaları

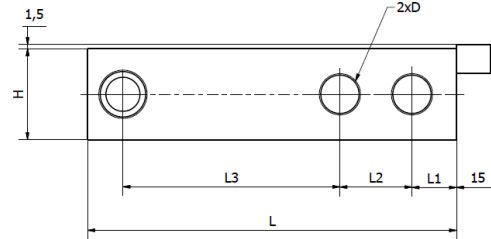
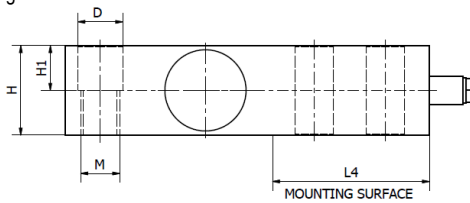


Ölçüler (mm)

75 kg ... 300 kg



500 kg ... 10.000 kg

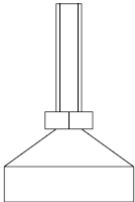


Kapasite (kg)	Ölçüler (mm)								
	L	L1	L2	L3	L4	H	H1	ØD	M
75 ... 2000	130	15.7	25.4	76.2	52	32	16	13.5	M12x1.75
3000 ... 5000	171.5	19.1	38.1	95.3	72.5	38	19	21	M20x2.5
10000	222.3	25.4	50.8	123.8	102	50.8	25.4	26.2	M24x2

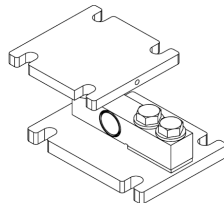
Kullanım Şekli / Montaj Aparatı

(*) Ayrıntılar "Montaj Aparatları" kısmında verilmiştir.

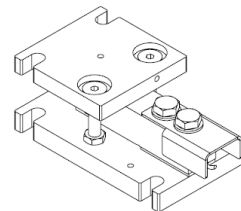
Bilyalı Baskül
Ayağı



2101-M01



2101-M02



Teknik Özellikler

	Parametreler	Değer		Birim
1	Nominal Kapasite (E_{max})	75, 150, 300, 500, 1000, 1200, 1500, 2000	3000, 5000, 10000	kg
2	Sinyal Kazancı	2.0 ± %0.1		mV/V
3	Doğruluk Sınıfı	C3	-	
4	$Y=E_{max}/V_{min}$	12000	-	
5	Toplam Hata	< ± 0,02		%FSO
6	Sıfır Dengesi	< ± 2		%FSO
7	Sıfır Üzerine Sıcaklık Etkisi	0.002		%FSO / °C
8	Çıkış Üzerine Sıcaklık Etkisi	0.0012		%FSO / °C
9	Sıcaklık Aralığı (Düzeltilmiş)	-10 ... +40		°C
10	Sıcaklık Aralığı (Güvenli)	-20... +70		°C
11	Güvenli Aşırı Yükleme	150		% E_{max}
12	Kırılma kapasitesi	200		% E_{max}
13	Besleme Gerilimi (Maks)	15		V
14	Giriş Direnci	385 ± 10	400 ± 15	Ω
15	Çıkış Direnci	352 ± 3	352 ± 5	Ω
16	Yalıtım Direnci	> 5000		MΩ
17				
18				

(*) FSO = Full Scale Output

(**) Koruma sınıfı = IP67 (75 kg...300 kg), IP68 (500 ... 10000)

Kablo Özellikleri

Kablo Uzunluğu:5 m (≤5000kg)

..... 10 m (10000kg)

Kablo Çapı:Ø5 mm

